



Date: 12 March 2009

Service Bulletin: TT503

Subject: ARB Equipment Registration (ARBER) Model and Engine Information

SharePoint Info Central: This bulletin is available on SharePoint Info Central\ Bulletins\Service Bulletins

Summary

The purpose of this bulletin is to assist anyone required to fill out the ARB, TRU form find the required model and engine information.

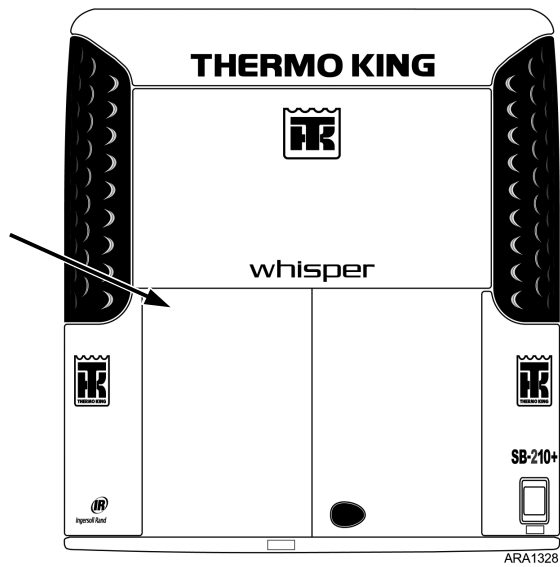
NOTE: CARB allows a TRU to have an engine that was manufactured up to one year before the TRU was manufactured. See advisory 08-01.

https://ww2.arb.ca.gov/sites/default/files/2022-09/advisory_08_01.pdf

STEP 1: Identify the Unit

Locate the TRU/TRU Generator Set Unit Serial Number Plate.

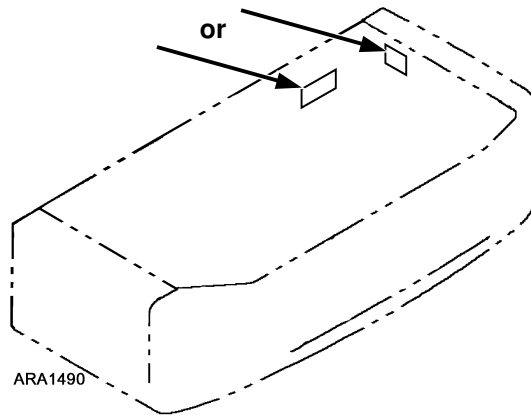




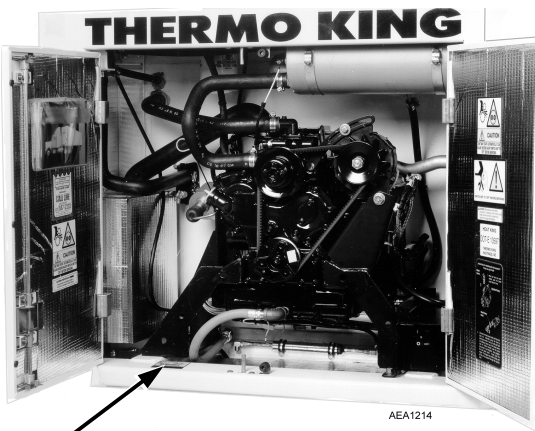
SB Units – Inside Door



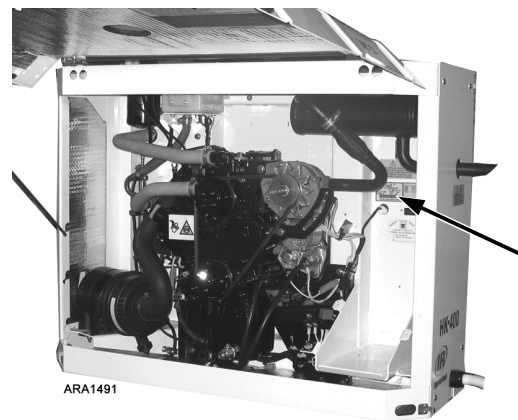
Super II Units – Inside Door



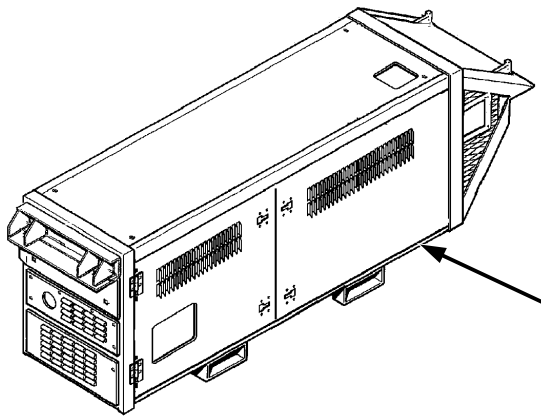
Truck Units



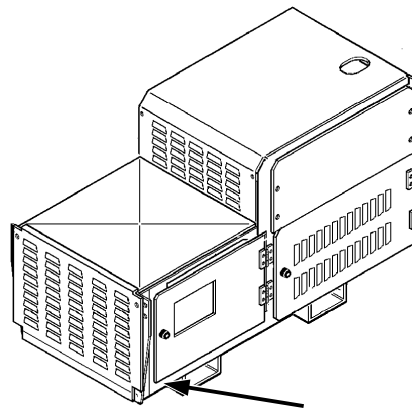
HK Units



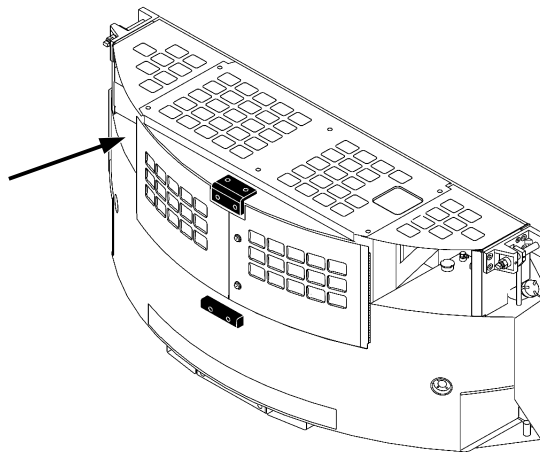
HK-400 Units



SGSM Generator Set Units



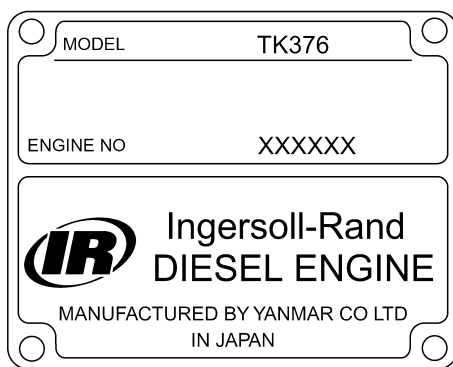
SGCM Generator Set Units



SGO Generator Set Units

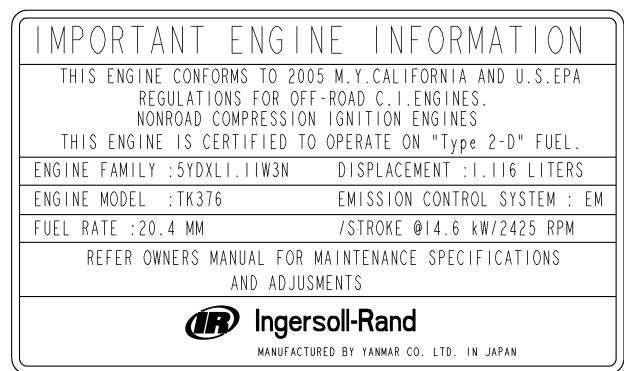
STEP 2: Identify the Engine

Locate the Engine Serial Number Nameplate and the Engine Emissions Label.



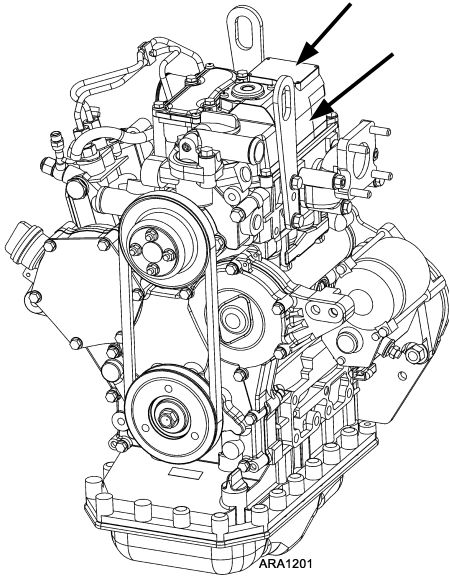
ARA1127

Typical Engine Serial Number Nameplate

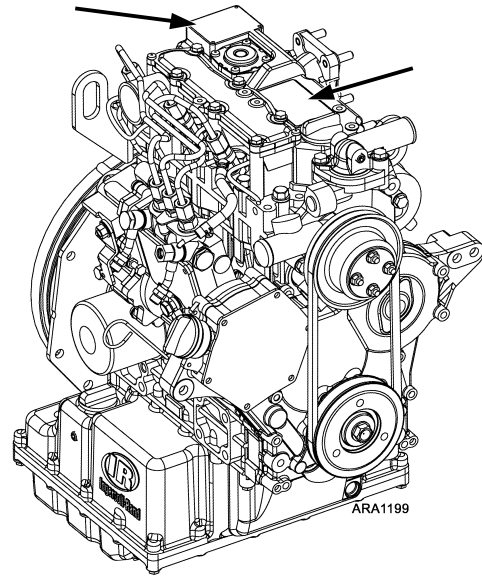


ARA1492

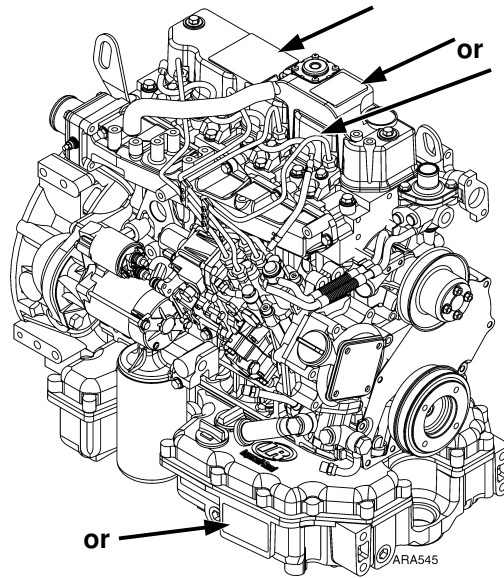
Typical Engine Emissions Label



Typical 2-Cylinder Engine



Typical 3-Cylinder Engine



Typical 4-Cylinder Engine

STEP 3: Fill Out the Form

TRANSPORT REFRIGERATION UNIT ATCM MODEL-ENGINE-COMPLIANCE INFORMATION FORM

<https://ww2.arb.ca.gov/resources/documents/ttdftb-030-tru-atcm-model-engine-compliance-information-form>

Enter the TRU/TRU Generator Set information from Old Style Serial Number Plate. (See next page for New Style Serial Number Plate.)

TRU/TRU Generator Set Unit Information

***indicates required field**

Provide TRU/TRU Generator Set unit information here. Do not provide engine information on this page. The engine must be entered on the compliance information page (page 3 of this form).

TRU/TRU Generator Set Unit Type*

☐

TRU

☐

TRU Generator Set

TRU/TRU Generator Set Unit Manufacturer*

Thermo King

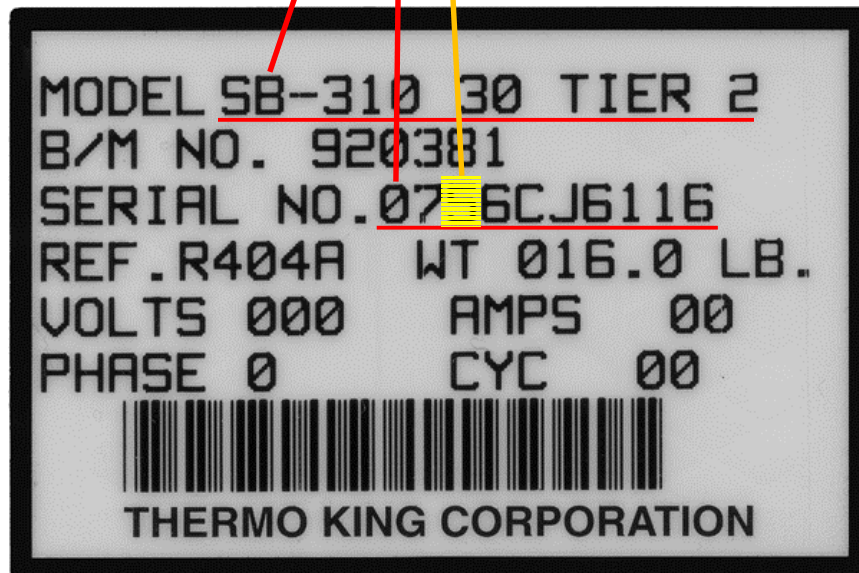
TRU/TRU Generator Set Unit Model*

TRU/TRU Generator Set Unit Model Year*

TRU/TRU Generator Set Unit Serial Number*

TRU/TRU Generator Set Unit ID

Third Digit in Serial Number is Model Year



Old Style Serial Number Plate

Enter the TRU/TRU Generator Set information from New Style Serial Number Plate.

TRU/TRU Generator Set Unit Information

***indicates required field**

Provide TRU/TRU Generator Set unit information here. Do not provide engine information on this page. The engine must be entered on the compliance information page (page 3 of this form).

TRU/TRU Generator Set Unit Type*

☐

TRU

☐

TRU Generator Set

TRU/TRU Generator Set Unit Manufacturer*

Thermo King

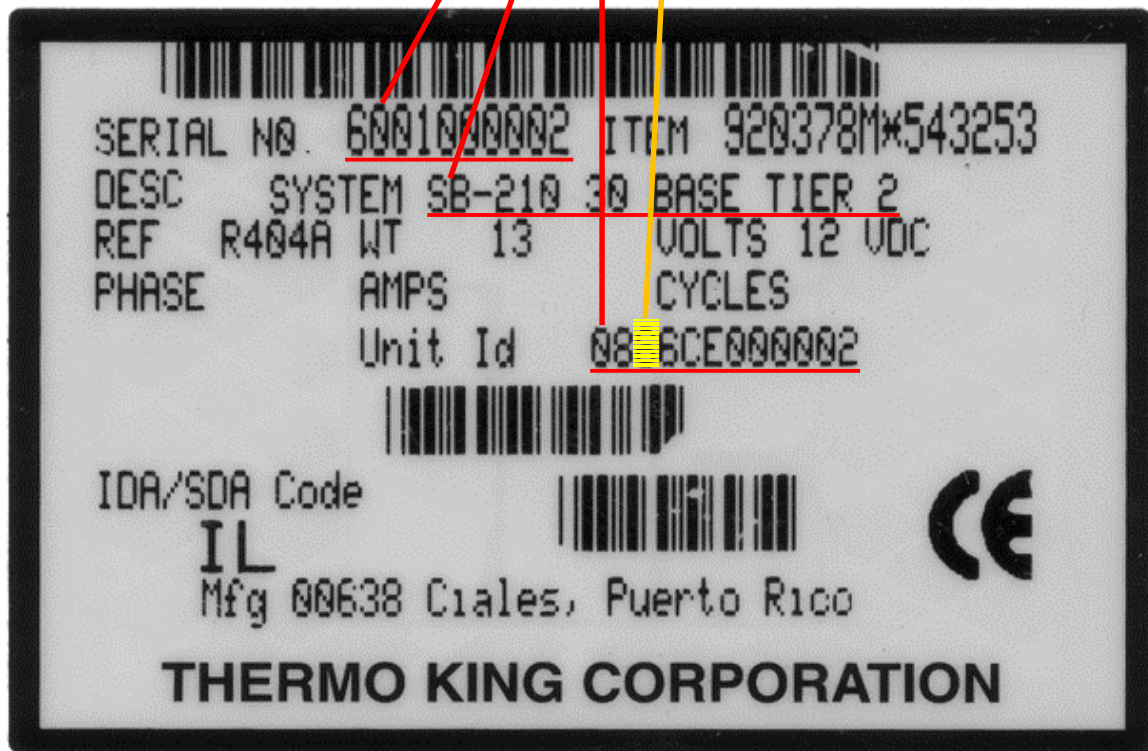
TRU/TRU Generator Set Unit Model*

TRU/TRU Generator Set Unit Model Year*

TRU/TRU Generator Set Unit Serial Number*

TRU/TRU Generator Set Unit ID

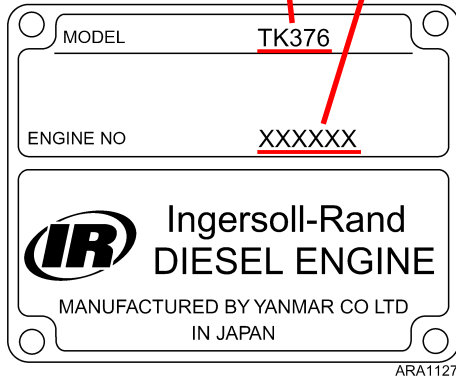
Third Digit in Unit ID is Model Year



New Style Serial Number Plate

Enter the engine information.

		4-Cylinder Engines	2 and 3-Cylinder Engines
TRU Engine Information (all fields required)			
TRU Engine Manufacturer	<input type="text" value="Yanmar"/>	Power Rating	<input type="checkbox"/> <25HP (<19kW) <input type="checkbox"/> ≥25HP (≥19kW)
TRU Engine Model	<input type="text"/>	TRU Engine Model Year	<input type="text"/>
TRU Engine Serial Number <input type="text"/>			



Typical Engine Serial Number Nameplate

IMPORTANT ENGINE INFORMATION	
THIS ENGINE CONFORMS TO 2005 M.Y. CALIFORNIA AND U.S. EPA REGULATIONS FOR OFF-ROAD C.I. ENGINES. NONROAD COMPRESSION IGNITION ENGINES	
THIS ENGINE IS CERTIFIED TO OPERATE ON "Type 2-D" FUEL.	
ENGINE FAMILY : 5YDXLI.11W3N	DISPLACEMENT : 1.116 LITERS
ENGINE MODEL : TK376	EMISSION CONTROL SYSTEM : EM
FUEL RATE : 20.4 MM	/STROKE @ 14.6 kW/2425 RPM
REFER OWNERS MANUAL FOR MAINTENANCE SPECIFICATIONS AND ADJUSTMENTS	
Ingersoll-Rand MANUFACTURED BY YANMAR CO. LTD. IN JAPAN	

Typical Engine Emissions Label

NOTE: CARB allows a TRU to have an engine that was manufactured up to one year before the TRU was manufactured. See advisory 08-01.

https://ww2.arb.ca.gov/sites/default/files/2022-09/advisory_08_01.pdf